



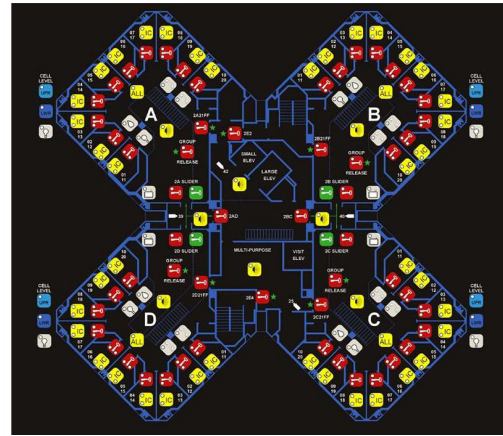
SECURE-TECH
DETENTION ELECTRONIC SYSTEMS
ETECH CONTROLS CORPORATION - MANUFACTURER
4051 ALVIS COURT #3, ROCKLIN, CALIFORNIA, USA 95677
TEL (916) 630-1300 • FAX (916) 630-1100 • FREE (800) 800-2523

**MODEL
GCP-MEMBRANE**

MEMBRANE SWITCH PANEL ASSEMBLY

FEATURES:

- HARDCOATED POLYESTER OVERLAY
- LONG LIFE OVERLAY, SWITCHES AND LEDS
- REAR REPLACEABLE SWITCHES AND LEDS
- HIGH RESOLUTION GRAPHICS
- FULLY ASSEMBLED AND TESTED
- 2 YEAR WARRANTY



FUNCTIONAL DESCRIPTION:

The membrane switch panel interfaces the operator with separate control electronics equipment, providing both LED status indication and audible switch activation feedback upon operation. A switch activation "blip" tone signal is provided either by an HC-0701 Remote Panel Controller or via separate remote logic operation.

LAMINATED CONSTRUCTION:

A hardcoated polyester working surface, aggressive intermediate adhesive layer, intermediate vinyl, low tack "Post-It" type adhesive layer, and an aluminum baseplate material are carefully laminated together to produce a control panel that provides the best combination of flexibility, durability, scratch resistance, and textured non-glare features.

The low tack adhesive layer allows the plastic overlay to be removed and replaced with a new overlay years later if desired to update the graphics. The laminated plastic overlay material has been tested to well over 5 million underlying switch activations with no perceivable material degradation.

The laminated plastic overlay is typically 18 mil thickness and the aluminum baseplate is 3/16" thickness. A continuous plastic edge trim finishes the assembly and prevents de-lamination at the panel edges.

HIGH RESOLUTION GRAPHICS:

High resolution graphics are provided, in up to 16.7 million photo-realistic colors, and are protected inside the plastic overlay laminations.

SWITCHES / LEDS:

Membrane panel switches are models HC-0841 (single) and HC-0842 (dual), with an operational life of one million actuations minimum. LEDs are T-1 size high intensity, and provide an 11 year average (MTB) life. All switch and LED connections are quick disconnect for ease of maintenance service.

WIRING:

Hardwired panels are connected with custom stranded 25 pair cables and telephone type quick disconnect plugs. Audio signals are connected via twisted / shielded pair cables. Miniature plastic wiring ducts and cable strain-reliefs are provided to securely retain the wiring while providing complete accessibility for ease of maintenance service.

Panels can also be provided with HC-0701 Control Panel Communicator(s) for RS-485 communication with Programmable Logic Controllers and / or computers. Four HC-0731 16 Point Adapters, or two 25 pair telephone type cables, are required to connect from an HC-0701 to 128 switches and 128 LEDs. A single twisted / shielded data pair cable connection provides for full communication. The modules are mounted on the backside of the panel when space allows, or on a separate backpanel that must be mounted directly under the facepanel.

OPTIONS:

1. HC-0701 Remote Panel Controller(s) for PLCs
2. HC-0806 LED supervision (hardwired panel only)
3. Other features as required

The Sign of Excellence